

JCPenney

The Shops at Ardmore
1207 N COMMERCE STREET
Ardmore, OK

This Property is part of a Surplus Store Portfolio Available for Sale

STORE
#141

JCPenney



34,170
TOTAL SF



2.5±
ACRES

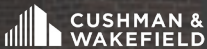


1
FLOOR



14,000
VPD OFF
US HWY 77

EXCLUSIVELY OFFERED FOR SALE



B | RILEY
Real Estate

PROPERTY HIGHLIGHTS

The Shops at Ardmore is a 450K sf regional retail center featuring a strong lineup of anchors that includes Hobby Lobby, Staples, Planet Fitness, TJ Maxx and Ulta. Ardmore, OK, is located equidistant between Oklahoma City (90 miles north) and Dallas (90 miles south). The property is the dominant shopping center in the city, benefiting from its location along the area's primary north/south roadway (US Hwy 77) and just 1-mile east of an interchange with I-35.

For additional information on this Property or other opportunities in the Portfolio visit us on the web at:

jcpennyportfolio.com

Click here for the online document
center for store #141



B | RILEY
Real Estate

JCPenney

The Shops at Ardmore
1207 N COMMERCE STREET
 Ardmore, OK

SITE
 PLAN



DEMOGRAPHICS

3-MILES

5-MILES

10-MILES



Total Population

22,972

26,748

39,330



Total Households

9,112

10,549

15,247



Average Household Income

\$66,866

\$67,666

\$67,770



Median Age

36.7

37.1

38.0



of Employees

13,193

15,127

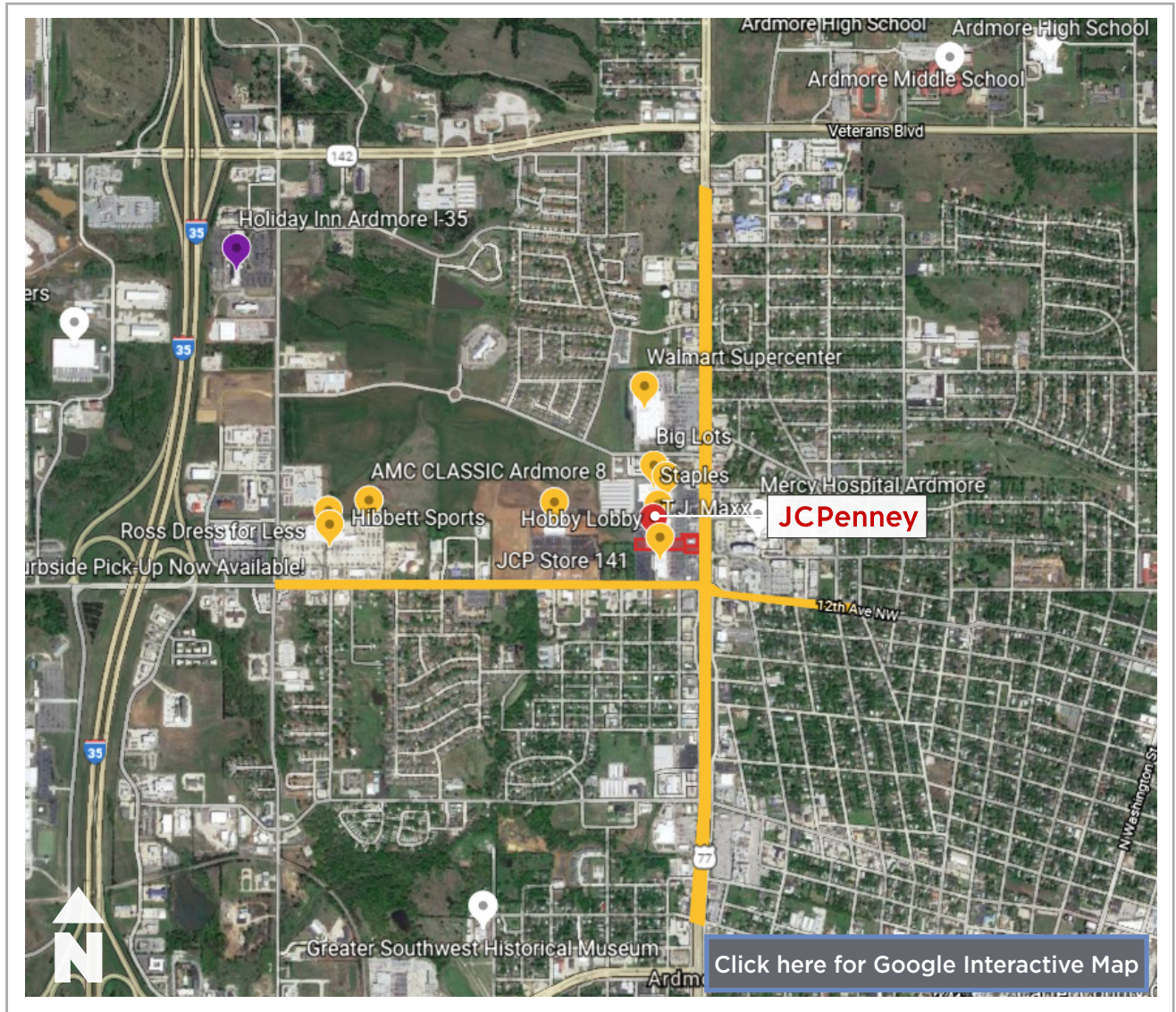
17,531

©2020 Cushman & Wakefield and B. Riley Real Estate. All rights reserved. The information contained in this communication is strictly confidential. This information has been obtained from sources believed to be reliable but has not been verified. NO WARRANTY OR REPRESENTATION, EXPRESS OR IMPLIED, IS MADE AS TO THE CONDITION OF THE PROPERTY (OR PROPERTIES) REFERENCED HEREIN OR AS TO THE ACCURACY OR COMPLETENESS OF THE INFORMATION CONTAINED HEREIN, AND SAME IS SUBMITTED SUBJECT TO ERRORS, OMISSIONS, CHANGE OF PRICE, RENTAL OR OTHER CONDITIONS, WITHDRAWAL WITHOUT NOTICE, AND TO ANY SPECIAL LISTING CONDITIONS IMPOSED BY THE PROPERTY OWNER(S). ANY PROJECTIONS, OPINIONS OR ESTIMATES ARE SUBJECT TO UNCERTAINTY AND DO NOT SIGNIFY CURRENT OR FUTURE PROPERTY PERFORMANCE.

JCPenney

The Shops at Ardmore 1207 N COMMERCE STREET Ardmore, OK

AERIAL
VIEW



FOR ADDITIONAL INFORMATION ON THIS PROPERTY PLEASE CONTACT:



MITCHELL HALPERN

Director

Cushman & Wakefield

+1 305 533 2855

mitchell.halpern@cushwake.com

B | RILEY
Real Estate